



**ELECTRONIC COPY**

## LABORATORY GROWN DIAMOND REPORT

January 3, 2023	
IGI Report Number	LG563204054
Description	LABORATORY GROWN DIAMOND
Shape and Cutting Style	ROUND BRILLIANT
Measurements	6.92 - 6.93 X 4.25 MM

## GRADING RESULTS

Carat Weight	1.27 CARAT
Color Grade	D
Clarity Grade	VVS 2
Cut Grade	IDEAL

### ADDITIONAL GRADING INFORMATION

Polish	EXCELLENT
Symmetry	EXCELLENT
Fluorescence	NONE

Inscription(s) LABGROWN  LG563204054

Comments: As Grown - No indication of post-growth treatment.

This Laboratory Grown Diamond was created by High Pressure High Temperature (HPHT) growth process.

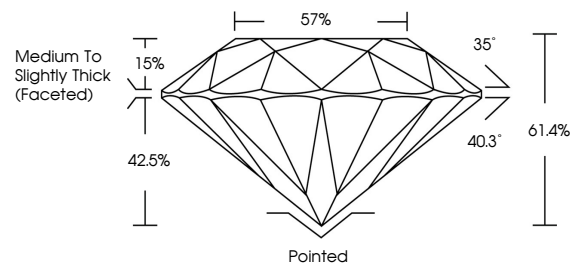
Type II

## LABORATORY GROWN DIAMOND REPORT

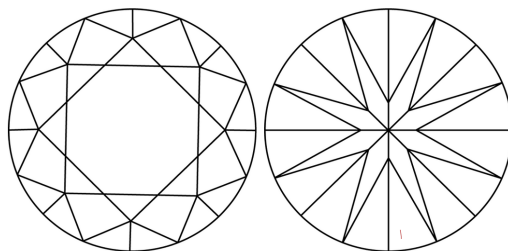
LG563204054

Report verification at [igi.org](http://igi.org)

## PROPORTIONS



## CLARITY CHARACTERISTICS



## KEY TO SYMBOLS

Red symbols indicate internal characteristics.  
Green symbols indicate external characteristics.

LABORATORY GROWN  
DIAMOND REPORT

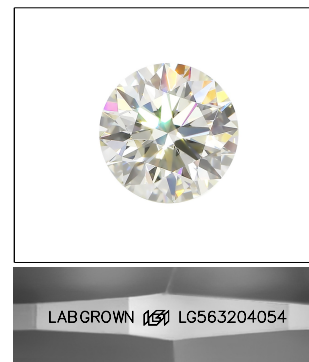
## GRADING SCALES

## CLARITY

IF	VVS <sup>1-2</sup>	VS <sup>1-2</sup>	SI <sup>1-2</sup>	I <sup>1-3</sup>
Internally Flawless	Very Very Slightly Included	Very Slightly Included	Slightly Included	Included

**COLOR**

D E F G H I J Faint Very Light Light

LASERSCRIBE<sup>SM</sup>

Sample Image Used



© IGI 2020, International Gemological Institute

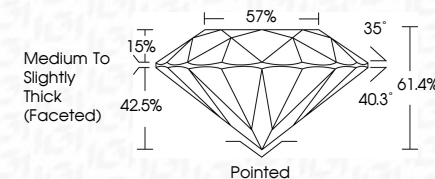
FD - 10 20

**www.igi.org**

## LABORATORY GROWN DIAMOND REPORT

January 3, 2023	
IGI Report Number	LG563204054
Description	LABORATORY GROWN DIAMOND
Shape and Cutting Style	ROUND BRILLIANT
Measurements	6.92 - 6.93 X 4.25 MM

GRADING RESULTS	
Carat Weight	1.27 CARAT
Color Grade	D
Clarity Grade	VVS 2
Cut Grade	IDEAL



### ADDITIONAL GRADING INFORMATION

Polish	EXCELLENT
Symmetry	EXCELLENT
Fluorescence	NONE
Inscription(s)	LABGROWN (15) LG563204054

Comments: As Grown - No indication of post-growth treatment.  
This Laboratory Grown Diamond was created by High Pressure High Temperature (HPHT) growth process.  
Type II



<b>January 3, 2023</b>	<b>IGL Report No. GSG2304064</b>	<b>1.27 CARAT</b>	<b>D</b>
<b>ROUNDED BRILLIANT</b>	<b>ROUND - 6.93 X 4.25 MM</b>	<b>VVS 2</b>	<b>ID5A</b>
<b>Carat Weight:</b>	<b>Color Grade:</b>	<b>Clarity Grade:</b>	<b>Cut Grade:</b>
<b>6.92 - 6.93 X 4.25 MM</b>	<b>E</b>	<b>Very Good</b>	<b>Excellent</b>
<b>Depth:</b>	<b>Table:</b>	<b>57%</b>	<b>57%</b>
<b>Girdle:</b>	<b>Fluorescence:</b>	<b>Medium to Slightly Thick (Faceted)</b>	<b>None</b>
<b>Polish:</b>	<b>Symmetry:</b>	<b>EXCELLENT</b>	<b>EXCELLENT</b>
<b>Inscriptions:</b>	<b>Laser Inscription:</b>	<b>NONE</b>	<b>LASER-GROWN (g) LASER-GRADUATED</b>
<b>Comments:</b> As Grown - No indication of post-growth treatment.			
<b>The Laboratory Grown Diamond was created by High Pressure High temperature (HPHT) growth process.</b>			